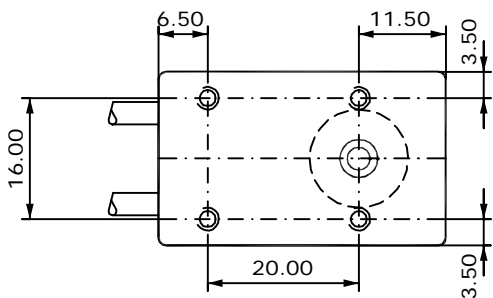


Connector 15 Pin D-Sub

- 1 Drive Coil black (1) low Shield
- 2 Drive Coil transparent (1) high
- 3 Position Output negativ transparent (2)
- 4 Ground (GND) black (2) Shield
- 5 _____
- 7 _____
- 8 Oscillator supply volt. 12 VDC red (2)
- 9 Drive Coil black (1) low Shield
- 10 Drive Coil transparent (1) high
- 11 Position Output positiv blue (2)
- 15 _____

(1) = Cable 1
(2) = Cable 2

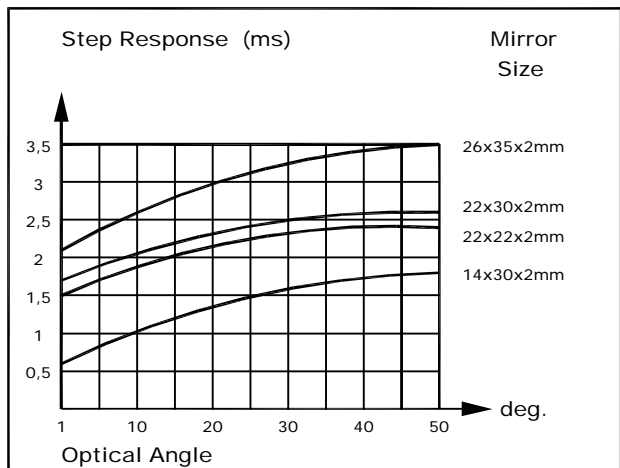
Scanner Connections 15 Pin D-Sub
Cables 300 mm long



Caution
Don't screw in the upper fixation screw deeper than **5mm** otherwise the inner parts will be destroyed.

Specifications

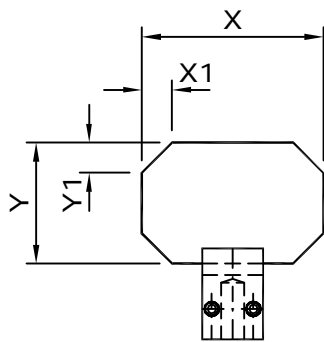
Optical Angle (deg.)	50
Coil Resistance parallel (ohm)	3.2
Linearity (%)	+/-0.20
Repeatability (mrad)	0.10
Zero Drift (mrad/deg. cel.)	0.60
Wobble (mrad)	0.02
Maximum Torque (Nm)	0.06
Typical Mirror Size (mm)	up to 25x35x2
Life time (cycles)	10 ¹⁰
Weight (g)	200



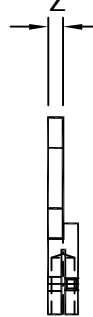
Measured with LSK Scanner-Driver and Mirror-mount.

Mirror Mounts (MIDI) for Scanner 050EF

Specifications

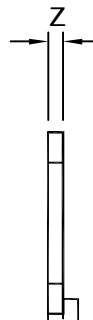
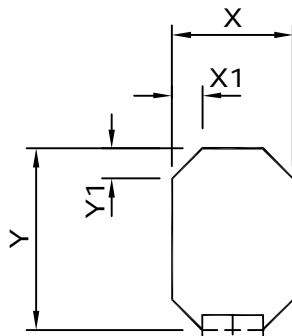


Mirror Size



Version 1

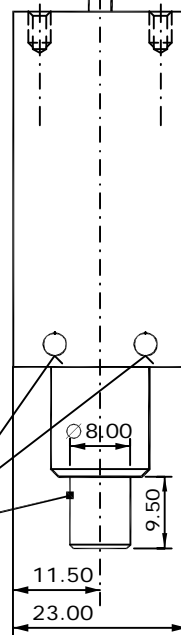
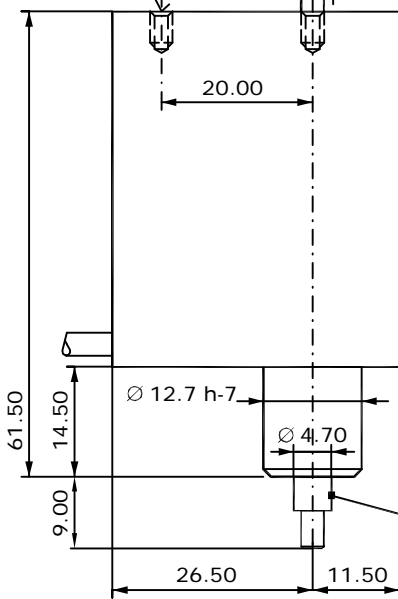
- X mm
- X1 mm
- Y mm
- Y1 mm
- Z mm



Version 2

- X mm
- X1 mm
- Y mm
- Y1 mm
- Z mm

4 pc. M3x5



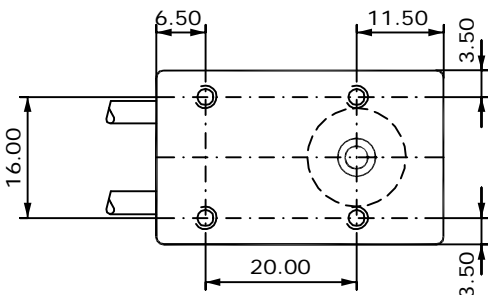
or

Connector 15 Pin D-Sub

- 1 Drive Coil black (1) low Shield
- 2 Drive Coil transparent (1) high
- 3 Position Output negativ transparent (2)
- 4 Ground (GND) black (2) Shield
- 5 _____
- 7 _____
- 8 Oscillator supply volt. 12 VDC red (2)
- 9 Drive Coil black (1) low Shield
- 10 Drive Coil transparent (1) high
- 11 Position Output positiv blue (2)
- 15 _____

- (1) = Cable 1
- (2) = Cable 2

Scanner Connections 15 Pin D-Sub
Cables 300 mm long



Caution

Don't screw in the upper fixation screw deeper than **5mm** otherwise the inner parts will be destroyed.