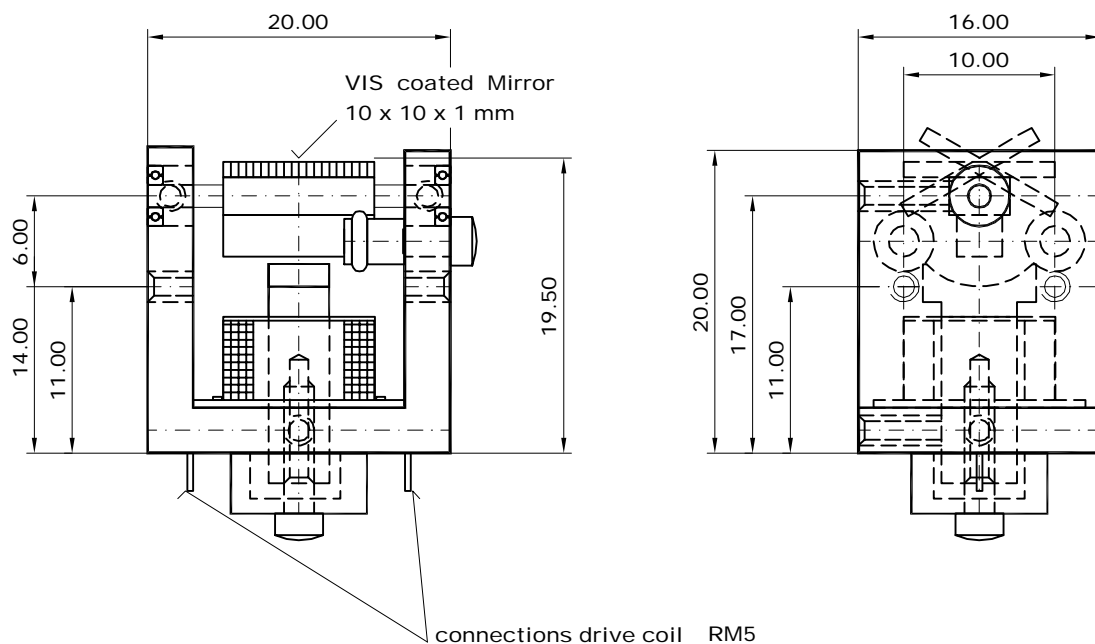


LSK AG has developed a Line Scanner that strikes due to its additional, special qualities:

- very small housing
- low cost
- durable - due to special ballbearings
- variable resonant-frequency between 70 - 100 Hz sinewave
- very low power consumption, typical 30 to 100 mW (battery use)
- very large variable deflection angle up to 100° optical
- excellent intensity of the whole laserline
- replacement for cylindrical lenses
- application also for dermatological systems (deflection-frequency between 0.01 - 40 Hz)
- simple custom-specific optimizing
- patent no. 0241430EP

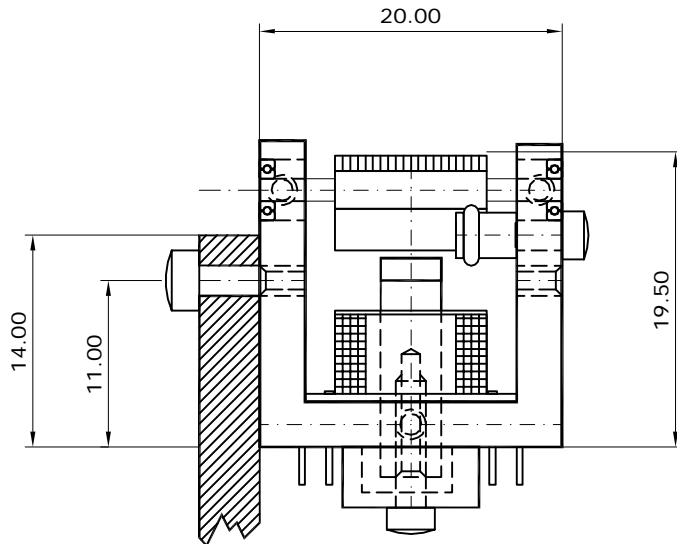


Specifications

Optical Angle at 100 Hz (deg.) max.	100
Resonant-Freq. adjustable (Hz)	70 - 100
Mirror Size (mm)	10 x 10 x 1
Coil Resistance (Ohm)	2,8
Life time (cycles)	10 ⁹
Weight (g)	13

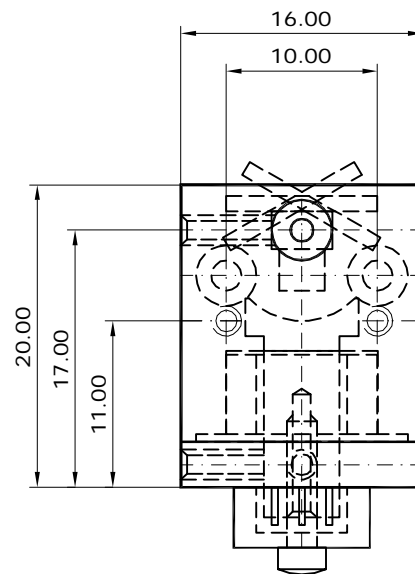
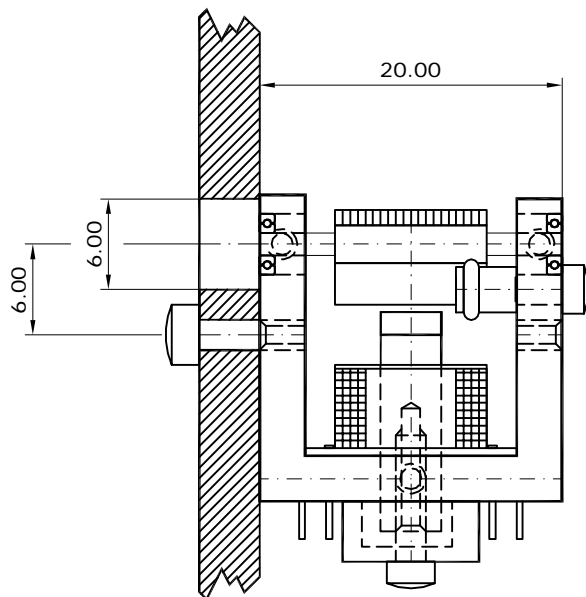
Version 1

Mounting Instruction



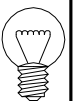
The ball bearings must not be covered by the mounting plate.

Version 2



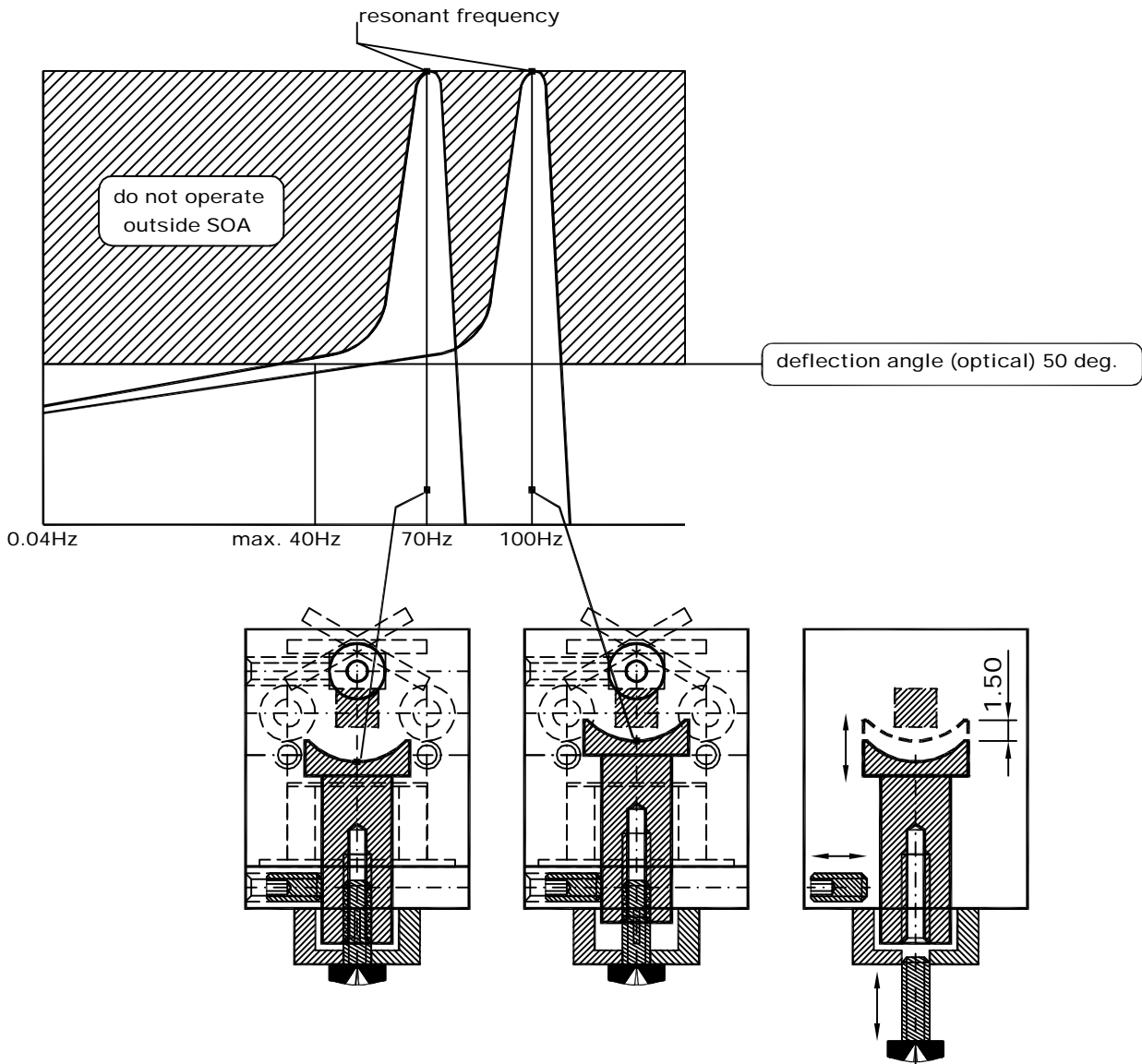
Specifications

Optical Angle at 100 Hz (deg.) max.	100
Resonant-Freq. adjustable (Hz)	70 - 100
Mirror Size (mm)	10 x 10 x 1
Coil Resistance (Ohm)	2,8
Life time (cycles)	10 ⁹
Weight (g)	13



10

Deflection angle by constant driver voltage



Linearising circuit R/C

